

Baird Mandalas
Brockstedt

Doctors Pathology
Services

Adults Realty

id's Play by the Bay

Ebenezer Branch

Cape Henlopen
High School

Jack Lingo Realtor®

Orsini Roman C DPM

Cape Henlopen
School District

Fine Line Websites
& IT Consulting

ps Marine Services
supply store

Delaware

Pinewood Dr

Holly Rd

Pinewood Ct

2nd St

2nd St

1st St

Wells Field Rd

Wells Field Rd

Wells Field Rd

Kings Hwy

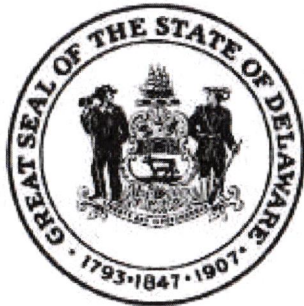
Rd 267

Rd 268

Clay Rd

268

Townsend Barn



State of Delaware
DELAWARE GEOLOGICAL SURVEY
John H. Talley, State Geologist



REPORT OF INVESTIGATIONS NO. 65

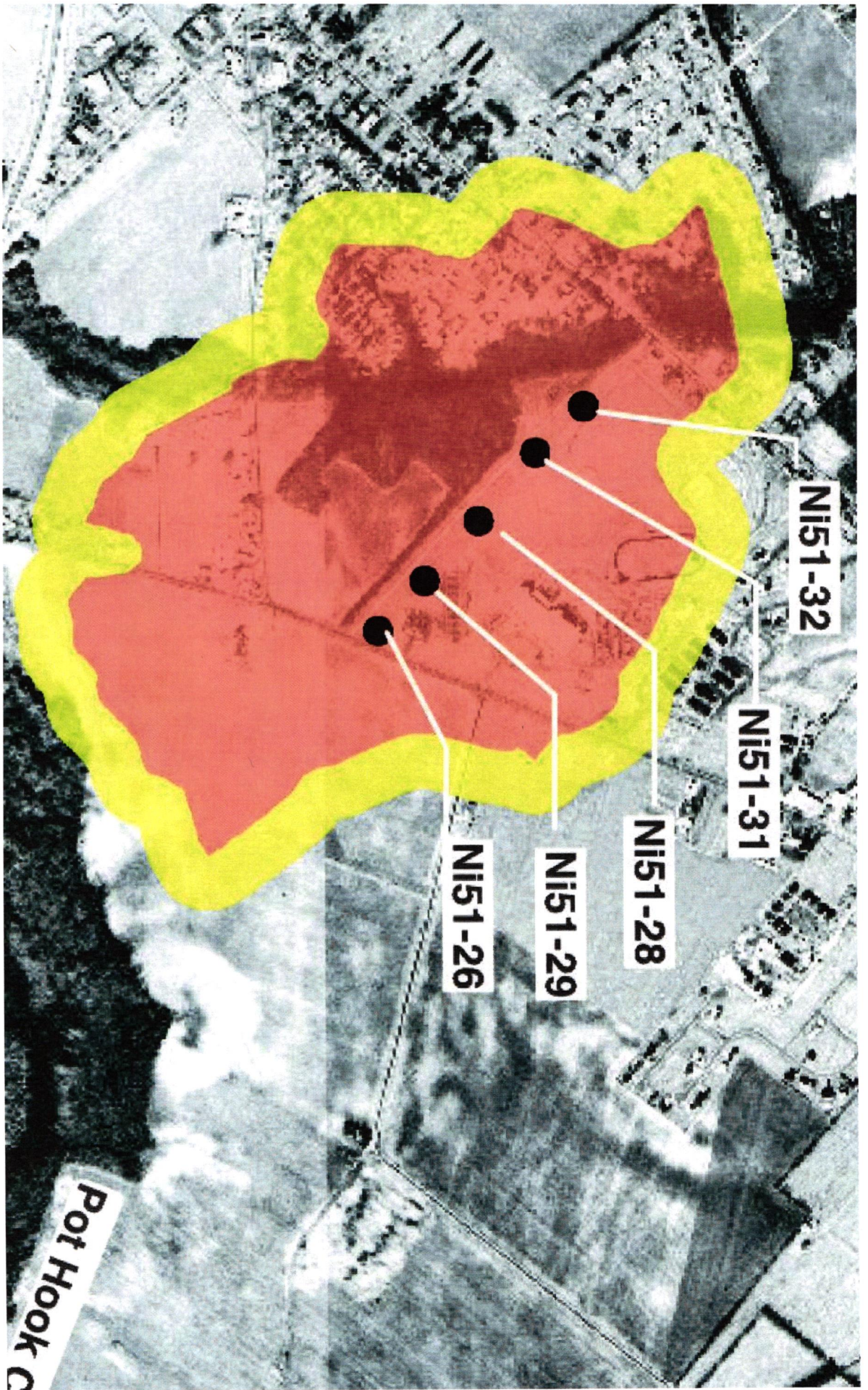
WELLHEAD PROTECTION AREA DELINEATIONS FOR THE LEWES-REHOBOTH BEACH AREA, DELAWARE

by

A. Scott Andres

Cheryl A. Duffy

Evan M. Costas



NI51-32

NI51-31

NI51-28

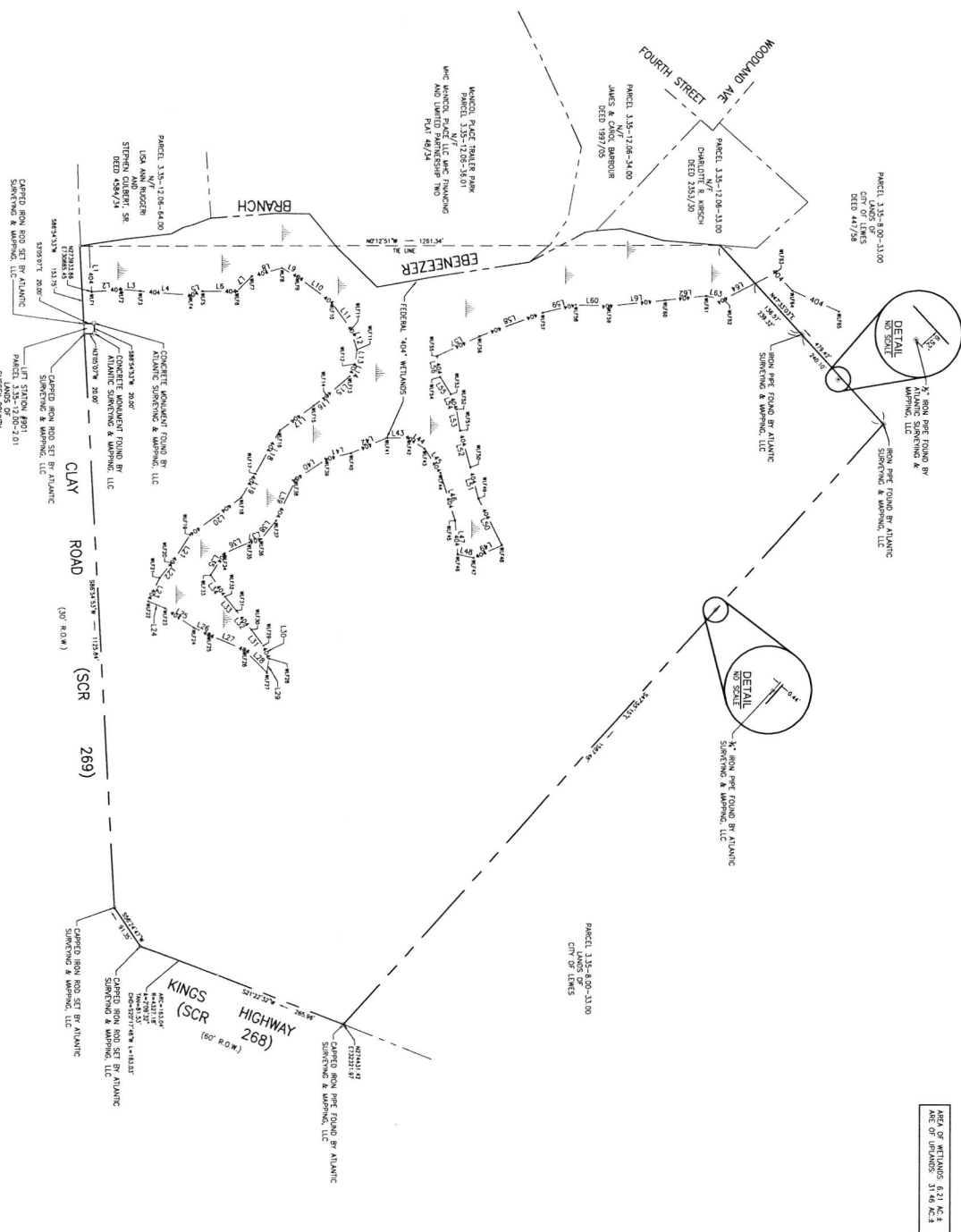
NI51-29

NI51-26

Pot Hook C

- GENERAL NOTES**
1. PROPERTY LINES SHOWN ON THIS DRAWING WERE TAKEN FROM A DRAWING PREPARED BY TOWNSEND, JR. & CO., DATED OCTOBER 2020.
 2. WETLAND DELINEATION WAS PERFORMED BY G.M.B. INC. DURING OCTOBER 2020. WETLAND DELINEATION WAS CONDUCTED BY GEORGE MILES & BUHR ARCHITECTS & ENGINEERS, INC. DURING OCTOBER 2020.
 3. WETLAND DELINEATION WAS CONDUCTED BY GEORGE MILES & BUHR ARCHITECTS & ENGINEERS, INC. DURING OCTOBER 2020.
 4. WETLAND DELINEATION WAS CONDUCTED BY GEORGE MILES & BUHR ARCHITECTS & ENGINEERS, INC. DURING OCTOBER 2020.
 5. THE WETLAND LOCATION IS AS SHOWN.

Line #	Direction	Length
1	406° 54' 53"	33.14'
2	302° 27' 24"	34.46'
3	302° 27' 24"	21.11'
4	302° 27' 24"	30.07'
5	302° 27' 24"	25.14'
6	302° 27' 24"	44.42'
7	302° 27' 24"	44.42'
8	302° 27' 24"	44.42'
9	302° 27' 24"	44.42'
10	302° 27' 24"	44.42'
11	302° 27' 24"	44.42'
12	302° 27' 24"	44.42'
13	302° 27' 24"	44.42'
14	302° 27' 24"	44.42'
15	302° 27' 24"	44.42'
16	302° 27' 24"	44.42'
17	302° 27' 24"	44.42'
18	302° 27' 24"	44.42'
19	302° 27' 24"	44.42'
20	302° 27' 24"	44.42'
21	302° 27' 24"	44.42'
22	302° 27' 24"	44.42'
23	302° 27' 24"	44.42'
24	302° 27' 24"	44.42'
25	302° 27' 24"	44.42'
26	302° 27' 24"	44.42'
27	302° 27' 24"	44.42'
28	302° 27' 24"	44.42'
29	302° 27' 24"	44.42'
30	302° 27' 24"	44.42'
31	302° 27' 24"	44.42'
32	302° 27' 24"	44.42'
33	302° 27' 24"	44.42'
34	302° 27' 24"	44.42'
35	302° 27' 24"	44.42'
36	302° 27' 24"	44.42'
37	302° 27' 24"	44.42'
38	302° 27' 24"	44.42'
39	302° 27' 24"	44.42'
40	302° 27' 24"	44.42'
41	302° 27' 24"	44.42'
42	302° 27' 24"	44.42'
43	302° 27' 24"	44.42'
44	302° 27' 24"	44.42'
45	302° 27' 24"	44.42'
46	302° 27' 24"	44.42'
47	302° 27' 24"	44.42'
48	302° 27' 24"	44.42'
49	302° 27' 24"	44.42'
50	302° 27' 24"	44.42'
51	302° 27' 24"	44.42'
52	302° 27' 24"	44.42'
53	302° 27' 24"	44.42'
54	302° 27' 24"	44.42'
55	302° 27' 24"	44.42'
56	302° 27' 24"	44.42'
57	302° 27' 24"	44.42'
58	302° 27' 24"	44.42'
59	302° 27' 24"	44.42'
60	302° 27' 24"	44.42'
61	302° 27' 24"	44.42'
62	302° 27' 24"	44.42'
63	302° 27' 24"	44.42'
64	302° 27' 24"	44.42'
65	302° 27' 24"	44.42'
66	302° 27' 24"	44.42'
67	302° 27' 24"	44.42'
68	302° 27' 24"	44.42'
69	302° 27' 24"	44.42'
70	302° 27' 24"	44.42'
71	302° 27' 24"	44.42'
72	302° 27' 24"	44.42'
73	302° 27' 24"	44.42'
74	302° 27' 24"	44.42'
75	302° 27' 24"	44.42'
76	302° 27' 24"	44.42'
77	302° 27' 24"	44.42'
78	302° 27' 24"	44.42'
79	302° 27' 24"	44.42'
80	302° 27' 24"	44.42'
81	302° 27' 24"	44.42'
82	302° 27' 24"	44.42'
83	302° 27' 24"	44.42'
84	302° 27' 24"	44.42'
85	302° 27' 24"	44.42'
86	302° 27' 24"	44.42'
87	302° 27' 24"	44.42'
88	302° 27' 24"	44.42'
89	302° 27' 24"	44.42'
90	302° 27' 24"	44.42'
91	302° 27' 24"	44.42'
92	302° 27' 24"	44.42'
93	302° 27' 24"	44.42'
94	302° 27' 24"	44.42'
95	302° 27' 24"	44.42'
96	302° 27' 24"	44.42'
97	302° 27' 24"	44.42'
98	302° 27' 24"	44.42'
99	302° 27' 24"	44.42'
100	302° 27' 24"	44.42'



AREA OF WETLANDS IS 1.14 AC ± AND IS SHOWN IN GREEN.

<p>WETLAND DELINEATION PLAN</p> <p>SHEET NO. PP-1</p> <p>DATE: 11/2/2020</p> <p>SCALE: 1" = 100'</p>	<p>JONES FARM NOW OR FORMERLY LANDS OF J.G. TOWNSEND, JR. & COMPANY</p> <p>LEWES & REHOBOTH HUNDRED SUSSEX COUNTY, DELAWARE</p>	<p>GMB GEORGE, MILES & BUHR, LLC ARCHITECTS & ENGINEERS SALISBURY • BALTIMORE • SEAFORD www.gmbnet.com</p>	NO.	REVISIONS	DATE